

# ЗОРСОН



2026

# Welcome to J-Popcon!

Our conguide is not only your guide to the entirety of J-Popcon 2026, but a precious memory of yet another J-Popcon. Our beloved convention, which has existed since 2000, is a place for all things related to Japanese popular culture, and collecting memorabilia is most definitely a huge part of this!

I will keep this introduction short, but I hope you will enjoy the work put into bringing this pamphlet together. Whether you use it on your phone or preorder it for eternal safekeeping, even as an autograph book, we have put hours into giving you this content. This includes all the many teams, who have secured and provided events, guests, and more for the festival itself, but especially the printing team, who have written, edited, proofread, and designed this conguide you're holding in your hands. It might seem frivolous to some, but to us, this, the conguide, is an important part of J-Popcon and its history. Collecting them all, even back from the 2000's, is a look back onto the community as a whole – and we are proud to continue the tradition.

So, thank you for opening it, reading this, and using the guide for J-Popcon 2026 – we hope it brings you the joy that it brought us to make it for you!

The biggest and best J-Popcon wishes,  
Ida  
The Eternal Conguide Editor





# Content

Foreword .....	4
General Rules .....	6
Areas.....	9
Bootleg .....	14
Programme Saturday .....	18
Programme Friday and Sunday .....	20
Friday Events .....	22
Saturday Events.....	26
Sunday Events .....	36
VIPs at J-Popcon .....	38
Cosplay shows .....	44
Saturday Judges .....	46
Sunday Judges .....	47
Convention Map .....	48
Volunteer appreciation .....	50

## Chief editor:

Ida Bjerring Winkler

## Graphic designer:

Amanda Solveig Kruse  
@Amanda\_Solveig

## Mascot illustrator:

Stickymaelk  
@stickymaelk





# Foreword

The everchanging landscape of fandom is all around us. 26 years of festivals celebrating Japanese pop culture lie behind us as a legacy to our love for all things Japan, creating a space where we can celebrate being a nerd, loudly and proudly.

You may have noticed it, but everyone is winding back the clock to previous decades and tuning in on everything 'retro'. The rise of 'nostalgia' and retro tech is here, and the discourse is changing. We see it on social media: cherishing the experience of creating cosplays and attending cons – as opposed to simply doing it for the 'gram and likes, for the views and engagements. It is no different for all the volunteers behind the scenes who are bringing J-Popcon to life. To experience the joy of creating and the joy of seeing it to fruition is almost an indescribable feeling. Although it is often intermingled with intense periods of hard work, the relief washes over you when you get to experience first-hand the satisfied guests enjoying themselves over the course of three full days.

This year is not unlike the others in the sense that J-Popcon is always fluid and in a state of continuous change. We are bringing old and new together in a way that embraces the pervasive nature of economic hardship everyone is currently experiencing while maintaining the core essence of what J-Popcon is all about: a place to meet like-minded souls, to empty your wallet, to make your heart happy and your soul content.





As a community, we are returning to our roots, and we see this happening in a more commercialised sense as well. In more recent times, we have seen a sharp increase in Danish dubbed anime, along with a new renaissance of Danish re-translations of both new and old manga titles, reviving the feel of nostalgia and, in turn, making Japanese pop culture more accessible. Having a wider selection of Danish translations means more people can enjoy anime and manga, especially people who may not understand English or Japanese. This is cause for celebration, as it is a great victory for the Danish nerd community, and something we should strive to protect, but it also gives cause to a gentle reminder: When anime becomes mainstream, it also becomes a commodity, and as a community, we need to become better at distancing ourselves from this. Liking anime is not only about how many key-chains you have, how many figurines you collect, but about sharing a passion for all things pop culture, creating a shared community, and about friendships.

We truly hope you will enjoy this year's festival, whether you are a newcomer or a returnee, and we would like to extend our thanks to all the guests, volunteers, vendors, and magicians-behind-the-scenes for your continued support and shared labour in making this happen.

**On behalf of the entire J-Popcon team,**  
Andreas Risager, Chairperson / J-Popkai  
& Nadia Mouritzen, Festival Leader/  
J-Popcon





# General Rules

We work hard to organise a fun and great J-Popcon for everyone, and to do that, we need your help.

With so many guests attending J-Popcon, it is important that you behave properly, keep conversations and music at a reasonable sound level, throw trash in the bins, nowhere else – and treat each other with respect. Keep a distance, sanitise, and wash your hands!

At times, you will have to queue for certain parts of J-Popcon, which can be frustrating. Queues are inevitable at events like these, and we ask you to be patient. We encourage you to use the wait to talk to one another and meet new friends.

At J-Popcon, it is the organisers', trustees', and gophers' responsibility to maintain order. The organisers, trustees, and gophers wear J-Popcon T-shirts, respectively in dark blue, blue, and orange. We have a security team on hand during the night.

## **There are some rules that everyone needs to follow:**

- Smoking is not allowed at J-Popcon at all, neither indoors nor outdoors.
- Drug use of any kind is prohibited, as per Danish law. If you carry prescription medicine on you, it is important that you can provide the proper documentation for this.

- Alcohol can be consumed in moderate amounts at our Lounge (18+). ID will be checked. Only valid ID such as a driver's license or a passport is approved. However, it is not allowed to be visibly drunk. Outside of this area, alcohol is forbidden.
- Violent behaviour or theft will result in an immediate expulsion from the convention, as well as charges being pressed against the offender.
- You are not allowed to touch or hug anyone without their consent. This rule also applies to Free Huggers. Free hug signs bigger than an A4 will be confiscated.
- Eating areas can be found in the entrance area, at our seating area outside near the food stands, and at our ØksBar. Eating outside of these areas is prohibited. Food and drinks are not allowed in the Game Room due to the electrical equipment, as is the case in the Dealer Room due to the merchandise. If you eat at J-Popcon, you are expected to clean up after yourself.
- Do not block hallways, stairs, or doorways.

**Any violation of these rules may result in an expulsion from J-Popcon.**





## Photography Rules

If you take pictures or video at J-Popcon, you must follow these rules of conduct. Failure to comply may result in expulsion from the convention.

You may not take any pictures or video at J-Popcon that can be used to identify individuals without their prior consent.



Any picture or video taken at J-Popcon may not be used for commercial purposes, unless an agreement exists with J-Popcon about such use of the material. This pertains to, but is not limited to, journalists, content creators, streamers, TikTokers, and YouTubers. If you are interested in such an agreement, please contact J-Popcon's PR division. Contact information can be found on our website.

Unless otherwise specified, flash photography is prohibited at our events, shows, lectures, etc.



As a participant of J-Popcon, you agree to being photographed by J-Popcon's official photographers in bordeaux T-shirts in the common areas of the convention or in larger groups. If you participate in an official event, you automatically consent to J-Popcon using the material, taken by J-Popcon's official photographers, for PR purposes.

## Weapon & Prop rules

The Danish weapons law is in effect at all times during J-Popcon.

Real weapons, functional or not, are not allowed at J-Popcon, even if the carrier has a firearms license to carry them. This includes, but is not limited to, firearms, and edged weapons. Breaking this rule will result in expulsion from J-Popcon and, in severe cases, the police will be contacted. Airsoft weapons and others alike are not allowed at the convention either.

Realistic prop weapons and prop weapons made of metal must be approved by an organiser. Prop firearms must be marked with an orange or red tip at the mouth of the barrel. General tools, such as screwdrivers and pliers, must be justified and still pass a check at Weapon Control.

Props and weapons, where any length exceeds 30 cm of the carrier's height, and any overhang exceeds the length of your own arm, are not allowed at J-Pop-

con. Props and weapons used in the cosplay shows have to be checked, and must not exceed 2 meters. In addition to that, your headgear may not protrude further from your head than 30 cm and it should at most weigh 2 kg.

It is the guests' responsibility to have their weapons and props checked and approved by one of J-Popcon's weapon controllers at Weapon Check next to Check-In. Armour, weapons, or other metal objects are not allowed to have sharp edges, but must be blunt, so they do not endanger the other guests. In general, common sense should be applied when handling weapons and props, plastic or not. You will risk a warning and have the weapon confiscated if used improperly.

J-Popcon reserves the right to confiscate any prop or weapon and keep them until you leave the convention, if an organiser deems it to be a danger to you or others. We also reserve the right to deny a weapon entry if the rules are broken or the weapon is deemed too dangerous to carry around the convention.





# Areas



.

## Information & Check-In

### Opening Hours

Friday: 12.00-23.00

Saturday: 10.00-23.00

Sunday: 10.00-18.00

To the left of the main entrance, the Information desk is the first place you see as you arrive at J-Popcon. Here, our loyal volunteers are ready to answer all your questions at all times during the entire weekend, whether it be about an event, a place you would like to visit, or J-Popcon in general. At our Information desk, you can also find our Lost & Found as well as buy different J-Popcon merchandise to celebrate J-Popcon with us.

We also have a small aid kit as well as a cosplay repair booth here, for the scary emergencies!

Right next to the Information desk is our Check-In area. Here, we scan your pre-purchased tickets and sell tickets for the entire weekend, as well as single days for you to be able to enjoy all of J-Popcon. Remember to have your ticket ready on your phone or in print if you pre-ordered them. Right next to it is also our very dear VIP and Guest check-in. This is for our event holders, VIPs, and general press to check in at.

## Prop & Weapon Check

With all kinds of costumes, armour, and weapons, our Prop & Weapon Check is a necessary part of our convention to ensure everyone's safety. You have to stop by here before entering the convention areas, if you are carrying anything from swords and armour to horns and helmets. If your prop or weapon have not been checked by our staff, you risk it being confiscated.

## Wardrobe

### Opening Hours

Friday: 16.00-22.00

Saturday: 10.00-22.00

Sunday: 10.00-17.00

Did you just arrive with a big suitcase? Or did you buy a big box full of manga, or raid the auction for all its items? Are you unsure what to do with all of these goodies for you to enjoy J-Popcon 2026 unburdened? Come visit J-Popcon's wardrobe in Øksnehallen to the right of the main entrance, where we are ready to store and look after your luggage. We will give you a ticket, so you can collect your belongings when your day is over. We promise to take good care of it, but we must inform you that it's at your own risk.

## Dealer Room

### Opening Hours

Friday: 16.00-22.00

Saturday: 10.00-22.00

Sunday: 10.00-17.00

The Dealer Room is J-Popcon's version of Akihabara, and this year, it is bigger and better than ever in its new location! Go to the middle of Øksnehallen, and you will be surrounded by booths and vendors selling everything from figurines, posters, and plushies to cool clothing, manga, music, and snacks. There is something for the eager collector, but also for those who want small and cute everyday items or something for your sweet tooth.

J-Popcon takes great care to stop the sale of fake items, so-called bootlegs, on our premises, and we do everything we can to make sure that you only bring home original items. Please see page 14 for more information regarding bootlegs. We hope that you will enjoy all the things that the Dealer Room has to offer.

## Artist Alley

### Opening Hours

Friday: 16.00-22.00

Saturday: 10.00-22.00

Sunday: 10.00-17.00

Right next to the Dealer Room, you find our Artist Alley with close to 100 exciting artists, both Danish and international. You can find unique art of your favourite characters, original crafts, and maybe a chance to commission the individual artists for art just for you. The imagination is the only limit when it comes to our amazing artists!

## Community Corner

### Opening Hours

Friday: 16.00-22.00

Saturday: 10.00-22.00

Sunday: 10.00-17.00

Located in the corner next to Tsubasa, you find our Community Corner. Here, you get the chance to meet different clubs, organisations, and other events, all celebrating Japanese hobbies and activities. This year, Community Corner is proud to say that the cosplay judges will have their own table in our corner.





## ØksBar

### Opening Hours

Friday: 16.00-22.00

Saturday: 10.00-22.00

Sunday: 10.00-17.00

Stop by our very own ØksBar! Here, you can buy yourself some snacks and beverages from our staff, who are always ready to serve you. When Sakura opens its doors, they will even open an ØksBar pop-up, so you won't have to venture far for refreshments during the shows!

## Tsubasa Stage

This stage might look like any other stage, but Tsubasa is where the good times never stop. Tsubasa is located in Øksnehallen, and from here, we want to spoil you with lots of amazing events. With its classic but very chic stage design, you will have the opportunity to learn about everything from make-up to Japanese boy bands, or maybe you will get the best deal of your life at the auction, and have the chance to show off your kahoot skills, so why not check it out?

## Denchi Stage

This stage is where you will see some of J-Popcon's most well-known events in a totally new format. It is located in Øksnehallen, and with its horseshoe shape, it will provide you with an immersive experience with great seating and angles for viewing. You can experience panels, Q&As, fashion shows, and maybe even get a date while hanging out at Denchi. Opportunities are endless, so why not visit this stage while you're at J-Popcon 2026?

## Maid Café

### Opening Hours

Friday: 16.00-20.00

Saturday: 10.00-20.00

Sunday: 10.00-16.00

Welcome home, Master and Princess! In our Maid Café, you will be served by our team of cute maids in pretty maid dresses and stylish butlers in beautiful suits. As a new concept this year, we are introducing a brand new experience, all inspired by Japan's own maid cafés, where you can reserve a table, either alone or with your friends, and choose if you want to sit together with a maid or butler to socialise and play fun and easy games.

Here, you will be the centre of attention as our honoured goshujinsama and ojousama, and the foremost task of our maids and butlers is to serve you. So if you want the real maid café experience, or even if you just want a cup of coffee and relax a bit on your own, we have room for you in our kawaii Maid Café in Spisehuset.



## Quiet Lounges

In both Øksnehallen and CPH Conference, you'll find two Quiet Lounges. In Øksnehallen, **Himawari** is located towards the back entrance, and in CPH Conference, **Bonsai** is located right next to our Genki Lounge and Manga Lounge. If you need a break from all the noise without having to explain or defend yourself and your needs, find one of our organisers nearby and they will help you access the Lounge. All we expect of you is to respect the other people and their needs in the Lounges – just like they have to respect yours!

## Genki Lounge & Manga Lounge

### Opening Hours

Friday: 16.00-02.00

Saturday: 10.00-02.00

Sunday: 10.00-16.00

Genki Lounge and Manga Lounge will take up space in CPH Conference, providing a combined area for relaxation, hanging out with your friends, and being creative if you so wish. Here, you will find manga to browse, Hama beads to create cute and pixelated designs, and drawing materials to your heart's content. For some extra fun, Genki Lounge will have a few pop-up mini events throughout the weekend to inject some extra pizzazz to the festivities!



## Tokidoki

Tokidoki is our newest event room, where most of our up and personal VIP events will take place! Here, we will host talks, panels, meet & greets, and much more with the VIPs of J-Popcon 2026, so stop by for some occasional meetings with the guests!

## Lounge (18+)

### Opening Hours

Friday: 16.00-00.00

Saturday: 12.00-00.00

Sunday: 12.00-16.00

If you need a place to relax, the Lounge is the place to be. Play fun board games and talk with both friends and new people in a cosy atmosphere. While you are taking a breather, we have many cold beverages to satisfy you, and some snacks to refuel you. So, come by our little safe haven and let our friendly staff serve you – we are located in CPH Conference, ground floor.

**NOTE:** You must be 18 years or older to enter. We require that you show a valid photo ID at the door.







## Game Room

### Opening Hours

Friday: 16.00-00.00

Saturday: 10.00-00.00

Sunday: 10.00-16.00

On the first floor of CPH Conference, you'll find our gaming mecca: our Game Room. If you want to get a break from the busy atmosphere in Øksnehallen, or if you simply want to work up a sweat with some competitive fighting games, you should swing by and see what's on offer. We have a lot of old and new friends this year, and hope that you're ready to say hi to all of them!

## Tabletop City

### Opening Hours

Friday: 16.00-22.00

Saturday: 10.00-22.00

Sunday: 10.00-16.00

J-Popcon's dedicated board and card game area! Located on the 2nd floor in CPH Conference, Tabletop City will host a myriad of analogue games in a cosy environment. Visit the area to see our collection of board games and the events we have to offer, from Yu-Gi-Oh! and Pokémon to Riichi Mahjong and so much more! On the 2nd floor, you also find the three event rooms, Chibi, Sora, and Minna.

## Sakura Stage

Sakura stage is J-Popcon's and biggest stage, located in DGI Byen. Sakura is where J-Popcon begins and ends, but in between these times is where Sakura really shines!

Here, you will find many events for your entertainment, such as our guests' panels and dance shows. This is also where you will find our amazing cosplay shows, where many of Denmark's cosplayers showcase their talent for costumes, performance, and craftsmanship on stage. Our Idol Show will also continue on this stage, so stop by for some musical festivities – when the music starts, the room becomes magical.



# Bootleg

## What are bootlegs?

Copies or reproductions of original merchandise made without the original company's consent are known as "bootlegs". Bootleg are against the copyright and trademark protection laws. Bootlegs are made illegally, and the creators of the anime or manga earn no money from the sales of bootlegs. Fan art is not considered bootleg if the design is significantly different from the original design.

We have made a list of precautions and things to check if you are in doubt whether a piece of merchandise is original or not.

## In general

In general, if a piece of merchandise is badly made or seems to be of inferior quality, it is likely a bootleg. The same applies to items with missing copyright information. The copyright information must be located next to a ©-label. It should note the creator, the publisher, and the producer on the item itself. If the packaging shows characters from more than one anime or manga, it is also a bootleg.

## Bootleg posters

The copyright information (© Creator/Publisher/Producer) should be printed on the front of the poster. If this is missing or wrong, the poster is a bootleg. If there is a number in the corner of the poster, e.g. 8143, it is a bootleg. If the print quality is low, for instance matte colours or thin paper, it is a bootleg. Please note that fan

art is not considered bootleg as long as the design is clearly different from the original design.

## How to spot bootleg plushies, T-shirts, and bags

The copyright information (© Creator/Publisher/Producer) should be printed on the washing label. If this is missing, lacking, or wrong, it is a bootleg.

## Bootleg figurines

Copyright information should be printed on the figurine itself with the format "© Creator/Publisher/Producer". If this is missing, wrong or lacking, the figurine is a bootleg. If you know what the original figurine or its packaging looks like, you might be able to spot minor differences between the two. If this is the case, you are looking at a bootleg. If the packaging contains a holographic sticker from the publisher, the figurine is an original, not a bootleg.

## How to spot bootleg CDs

If the CD is published by Miya Records, it is definitely a bootleg. If there is no copyright information printed directly on the CD (© Creator/Publisher/Producer), if the copyright information is lacking or wrong, or it doesn't contain the ©-symbol followed by the production information, it is a bootleg.

Holographic sticker





FAKE



ORIGINAL





# Bring home memories From J-Popcon 2026 with our merchandise!

Stop by our reception and find our unique merchandise to celebrate J-Popcon 2026! We have everything: tote bags, acrylic keychains, stickers, and even unique acrylic standees. You can even get your hands on merchandise from previous years as long as they're in stock.



# Scarlet

In the cinema  
**26TH FEBRUARY**



The visionary Oscar® nominated film maker **Mamoru Hosoda (MIRAI)** is behind this fantastic animated adventure about Scarlet – a sword-fighting princess from a wartorn middle age kingdom, who is on a dangerous mission to avenge her father's death. After failing her mission, she wakes up gravely wounded in "Otherworld", where she meets an idealistic young man from the present, who not only helps her to heal, but shows her the possibility of a future free from bitterness and rage. When Scarlet is confronted with her father's murderer once again, she faces her most challenging battle: Can she break the cycle of hatred and find meaning in life besides revenge?

# Saturday

Sakura

Denchi

Tsubasa

Ground floor  
Tokidoki

10:00-10:30					
10:30-11:00		Auction			
11:00-11:30					
11:30-12:00	Cosplay Catwalk				
12:00-12:30				Aikido: Showcase and Try-outs	
12:30-13:00					
13:00-13:30					
13:30-14:00		K-Pop Random Play Dance	Meet Cyberspace Celebs: Danish YouTubers		
14:00-14:30					
14:30-15:00					
15:00-15:30				Impact Dance Crew Performance	Meet and Greet: Arcane Danish Voice Actors
15:30-16:00					
16:00-16:30		Meet the Danish Voices behind One Piece	Belgijka Dance Workshop		
16:30-17:00					
17:00-17:30				Guess That Cosplay	
17:30-18:00		Special Effects: Masterclass			
18:00-18:30					Meet and Greet: One Piece Danish Voice Actors
18:30-19:00					
19:00-19:30					
19:30-20:00	Danish Cosplay Championship	Danish Cosplay Championship: Stream	Danish Cosplay Championship: Stream	Sake Tasting (18+)	
20:00-20:30					
20:30-21:00	Intermission Show	Intermission Show: Stream	Intermission Show: Stream		
21:00-21:30					
21:30-22:00	Award Show	Award Show: Stream	Award Show: Stream		
22:00-22:30					
23:00-23:30					
23:30-00:00					

Cosplay

Show

18+

VIP

Talks & P



## Workshops

# Friday

Friday	Sakura	Denchi	Tsubasa	Ground floor Tokidoki	
16:30-17:00	Opening Ceremony				
17:00-17:30					
17:30-18:00					
18:00-18:30	Voice of a Generation	KPOP RPD & Performance	Wotagei Workshop		
18:30-19:00					
19:00-19:30					Beer Tasting (18+)
19:30-20:00			Lip Sync for Your Life		
20:00-20:30	Idol Festival DK	J-Fashion Show			
20:30-21:00					
21:00-21:30					
21:30-22:00					
22:00-22:30					
22:30-23:00					
23:00-23:30					

# Sunday

	Sakura	Denchi	Tsubasa	Ground floor Tokidoki
10:30-11:00				
11:00-11:30		KPop Demon Hunters: Meet the Danish Voice Actors	Lasse Vestergaard Q&A	
11:30-12:00				
12:00-12:30				
12:30-13:00		Meet and Greet: KPop Demon Hunters		
13:00-13:30			Back to Basics: Masterclass	Code Vein 2: Sneak Peek
13:30-14:00				
14:00-14:30				
14:30-15:00	J-Popcon's Cosplay Show & Craftsmanship Competition	J-Popcon's Cosplay Show & Craftsmanship Competition: Stream	J-Popcon's Cosplay Show & Craftsmanship Competition: Stream	
15:00-15:30				
15:30-16:00				
16:00-16:30	Closing Ceremony			
16:30-17:00				
17:00-17:30				





# Friday

## 2XKO

CPH Esports returns once again to host fighting game tournaments at J-Popcon! Come join us when we battle it out in the newly released 2XKO! The tournament is open for every skill level, so come and join in on the fun!

**Game Room, 20.00-21.45**

## Beer Tasting (18+)

Come to our Lounge (18+) and try tasting a spellbinding selection of Japanese beers, and see if you fall in love with a new bottle! Remember to bring a legitimate picture ID to get into our Lounge (18+).

This event requires sign-up, ask in the lounge for further information. You must have purchased access to the tasting online beforehand.

**Tokidoki, 19.00-20.30**

## Bullying and Mental Health in Cosplay

A lot of people are struggling with bullying and bad mental health because of our cosplay community. Unfortunately, we don't talk enough about it. Here, we shed light on the situation and talk about how to deal with it.

**Sora, 18.00-18.45**

## Cuirass Concert

Come and hear the two knights, Joss and Adam, give you some nice medieval ambience as you enjoy your beer and feel like an RPG character. Cuirass are troubadours who'll make you feel like you're at a tavern.

**Lounge (18+), 18:00-19:00**

## Disco (18+)

Stop by our nighttime disco with music and dance. We even have a glowstick game for those of you who wish to meet new people!

**Lounge (18+), 21.30-00.00**

## Idol Festival DK

Idol Festival DK is a celebration of Asian Idol culture. Get ready for an exciting showcase with energetic performances from passionate idol fans, who are taking the stage to show off their skills! Come cheer them on and be part of the fun! Whether you're an idol fan or just looking for some fun, everyone is welcome!

**Sakura, 20.00-21.30**



## International Cosplay Competitions: Are They Really That Scary?

*with Bish Cosplay and Talon's Cosplay Crusade*

Have you ever wondered what it's like to represent your country in an international cosplay competition? Or maybe, you're already making plans to take part in the preselections someday? At this panel, you will learn everything you need to know – how to choose the best competition for you, how to survive the preselections, and finally, how not to go crazy during the finals.

**Chibi, 18.00-19.00**

## J-Fashion Show

Models showcase different styles of J-Fashion with outfits from their own wardrobe, while the host presents them, their outfit, and the style. So, if you want to experience Japanese fashion in all its glory, stop by this extravagant fashion show!

**Denchi, 20.00-21.00**

## Japanese History Super Test 9000!

There are samurais, ninjas, a world war, and atomic bombs, but what else has happened in Japan the last 15,000 years? Sports College Bosei presents the ultimate history kahoot and gives you a completely unique opportunity to learn more ... and to prove to your friends that you are the supreme Japan nerd! There is a prize for the winner of the kahoot.

**Minna, 21.00-22.00**

## K-Pop Quiz

*with Fusion*

Are you up to date on the latest K-Pop comebacks? Are you quick? Do you know all the idols? Are you a multi-stan? Then come join Fusion's K-Pop Quiz and show off your knowledge!

**Chibi, 19.30-20.30**



## KPOP RPD & Performance

*with K30T DANCE CREW*

Get ready for a high-energy celebration of K-pop culture as K30T Dance Crew hosts an unforgettable K-Pop Random Play Dance and live performance event! Whether you're a seasoned dancer, a casual fan, or someone who just loves great music, this event is designed to bring the community together through rhythm, excitement, and pure fun. The event kicks off with our Random Play Dance, where hit K-Pop songs shuffle at random and participants jump in to freestyle or follow the choreography they know and love. Following the RPD, K30T Dance Crew will take the stage with a series of dynamic performances, showcasing their dancing ability. There will also be time to mingle, snap photos, and connect with fellow fans and dancers. Join us and experience K-Pop the way it was meant to be: loud, lively, and full of passion!

**Denchi, 18.00-19.30**

## Lip Sync for Your Life

Have you ever dreamed of watching Naruto sing Rihanna's Umbrella? Now, it's your chance! Come and (pretend to) sing your heart out to your favourite songs.

**Tsubasa, 19.30-21.00**

## Opening Ceremony

Kickstart your weekend at J-Popcon 2026 with an awesome Opening Ceremony! Look forward to a mixture of live performances, fantastic costumes, and exciting surprises, which marks the beginning of the entire convention. We welcome you to a weekend filled with creativity, community, and love for Japanese pop culture!

**Sakura, 16.30-17.30**

## Speed Dating (18+)

Meet new friends or perhaps something more! At Speed Dating, you get a set amount of time to talk to someone, one on one, before changing to a new partner. It's up to you if you want to give someone your contact information afterwards or if you want to meet up afterwards.

**Lounge (18+), 19.30-20.30**

## Taiko no Tatsujin Tournament

The popular rhythm game with the Japanese taiko drum (in mini format) once again gets a tournament to see who can play the best for Don-chan! A song will be chosen by the staff, which you will have to complete, and the highest score wins. Come and join, even just to dance.

**Game Room, 18.00-20.00**





## Voice of a Generation

A Panel with Iris Meador Olsen (One Piece), Vibeke Dueholm (Candy Candy), and Annevig S. Ebbe (Naruto, Pokémon, Yu-Gi-Oh). The panel consists of a 90 minute talk with the voices that an entire generation remembers. They will talk about working as a voice actor, the industry, and funny, small glimpses into how it is to work during a production. At the end, there will be a Q&A with the audience.

**Sakura, 18.00-19.30**

## Werewolf

A staple at J-Popcon, Werewolf is back! Join us for a night of fun and mystery. At day, all seems well in your village, but everything changes at nightfall. On the outside, it's a simple village and you are its citizen, but nothing is what it seems. Figure out who amongst your friends you can trust, but be careful. One of them might just be a werewolf.

**Sora, 20.00-23.30**

## When Grandpa Was a Weeb: The Quiz

Are you an old con veteran, or perhaps you have a bunch of fingertip knowledge about the Danish convention community from the years 2010-2019? This quiz is for all of us old-timers, both of mind and body, who want to go with us on a journey through nostalgia and fun times in this amazing community.

OBS! We cannot take responsibility for all the cringe that this quiz may cause.

**Minna, 17.30-19.00**



## Why You Should Read Umineko no Naku Koro ni

Discover the world of Umineko, a masterpiece of mystery and horror. Join this spoiler-free talk to learn why it's unique, and why fans still argue its secrets more than a decade later. This top-rated Visual Novel might become your next big obsession.

**Sora, 19.00-19.45**

## Working as an Anime Animator

*with Lon*

Listen to an animator's journey into the anime industry! Lon is an anime animator and illustrator who has worked on shows such as One Piece, Pokémon, and The Seven Deadly Sins, and he will tell you all about working in the industry.

**Minna, 19.30-20.30**

## Wotagei Workshop

At our cheering workshop, you will learn how to cheer at Japanese concerts using penlights and the calls you make. Just in time for Idol Festival DK at Sakura later!

**Tsubasa, 18.00-19.00**

# • Saturday • ✨ 🌙

## **A Bike-about in Japan**

What would it be like to travel from North to South in Japan? And on a bicycle? Tag along as we hear stories from an epic bicycle trip in Japan with tips and tricks to travel low budget.

**Minna, 16.45-17.45**

## **Aikido: Showcase & Try-outs**

Come by and watch what the Japanese martial art Aikido is! First, they perform, and then you can try and make some of the techniques, lock, throw, and staff/sword.

**Tsubasa, 12.00-13.00**

## **Auction**

This is your chance! See what anime treasures and relics from a forgotten time are being put up for sale, and get ready to raise your hand to bid – because there will be heat! The perfect chance to walk home with something unique, or experience the ecstatic hype at the scene! A 'sport', both for players and audience.

**Denchi, 10.30-12.30**

## **Badges & Bookmarks**

### **Workshop 1**

Sports College Bosei invites you to a cut-and-paste workshop, where you can peacefully make badges or bookmarks out of your old mangas, magazines, stickers, or your own drawings. You can also have your name written in Korean hangul and use it in your design.

**Chibi, 19.30-21.00**

## **Belgijka Dance Workshop**

Thanks to the positive feedback from last year, we're repeating the Polish Belgijka Dance Workshop! Join us in the dance, also known by the name "Chapelloise", which recently became pretty much a tradition at all anime themed conventions in Poland.

**Tsubasa, 16.00-16.45**

## **Cosplay Catwalk**

Come show off your cosplay in J-Popcon's Cosplay Catwalk! All costumes of official designs are welcome, both homemade and purchased. All it requires is that you register online beforehand.

**Sakura, 11.30-12.30**



## Cosplay Improv Theatre

What happens when characters from completely different worlds meet in a supermarket or high school? The audience will choose the prompts and people on stage will act it out. Open for participation on the spot, we have cosplay parts available.

**Chibi, 12.00-13.00**

## Cosplay Video Screening

Come and watch wild cosplay videos on the big screen. Action, drama, and beautiful costumes together in one screening. Relax and enjoy the creativity of the community.

**Sora, 14.45-15.45**

## Critical Role Meetup

A small, non-formal cosplay meetup for Critical Role cosplayers. There will be a small quiz, otherwise it will just be some cozy mingling among fans of the popular series!

**Sora, 11.00-11.45**

## Danish Cosplay Championship

The biggest cosplay show and contents on Danish soil! This show blows everybody away year after year, and this year will be no exception. Get ready to sit on the edge of your seat, because this is a heaven for cosplayers!

**Sakura, 19.30-20.45**

## Danish Cosplay Championship: Intermission Show

Stay in your seat, while the judges deliberate about who is going to win the many prizes at DCC, because our Intermission Show will keep you entertained all the way through!

**Sakura, 20.45-21.15**



## Danish Cosplay Championship: Prize Award Ceremony

Come see the second part of the Danish Cosplay Championship, where we'll reveal the winners and who'll be going to represent Denmark in our international competitions!

**Sakura, 21.15-22.00**

## Danish Cosplay Championship: Stream

Swing by the two stages in Øksenhallen, Denchi and Tsubasa, to see the DCC being streamed live from our Sakura stage! Get ready to feel the hype and anticipation!

**Denchi & Tsubasa, 19.30-22.00**

## Disco (18+)

Stop by our nighttime disco with music and dance. We even have a glowstick game for those of you who wish to meet new people!

**Lounge (18+), 21.00-00.00**

## Family Feud Con Edition

What character do people cosplay the most? What is everyone's favourite shounen? Guess the most popular answer to questions we have asked the J-Popcon community.

**Chibi, 13.15-14.15**

## From Manga to the Final Screen: How Anime is Made Step by Step

*with Lon*

Stop by and get an overview of the anime pipeline from taking a manga to the final screen! Lon is an anime animator and illustrator who has worked on shows such as One Piece, Pokémon, and The Seven Deadly Sins, and he will tell you all about working in the industry.

**Minna, 12.00-13.00**

## Furry: An Introduction

A small introduction about what it means to be a furry, including an introduction to safety about and as fursuiters.

**Sora, 12.00-13.00**

## Furry Meet-up

LemonPie and Snivellus invite you to a meetup with other furies and therians, both with and without fursuit, just to have a good time together! There will be group photos taken, both in different groups of animal species and friend groups. Afterwards, there will be games, which you can join if you want to, otherwise, just stay and mingle with other likeminded people.

**Sora, 13.00-14.30**

## Guess That Cosplay

Can you guess a character just from their trousers? Come and guess when we reveal cosplays one detail at a time.

**Tsubasa, 17.00-18.00**





## How to Make Comics

### Step by Step

*with Line Nordskjold*

Learn how to turn your ideas into engaging narratives and how to create convincing characters and unforgettable designs. Line Nordskjold, creator of 'Under livet' and 'Roomies', will share know-how on the different phases when making comics as well as personal input on how to avoid burnout.

**Minna, 18.00-18.45**

## Impact Dance Crew Performance

Impact Dance Crew is a dance group from Odense, who will perform an awesome show, where they dance to songs you know from anime, film, K-Pop, and other media sources!

**Tsubasa, 15.00-15.45**

## Japanese Geography Super Test 9000!

Tokyo, Kyoto, Osaka, Hokkaido, Hiroshima – Japan is huge, bigger than Germany! And how much do you actually know about its many different landscapes, social groups, and animals? Sports College Bosei presents this ultimate geography kahoot and gives you a completely unique opportunity to learn more ... and to prove to your friends that you're the supreme Japan nerd!

**Minna, 20.30-21.30**

## Just Dance Tournament

Get together and bring on your best moves, because in this tournament you'll have to be able to move your body to win it all!

**Game Room, 12.00-14.30**

## K-Pop Random Play Dance

*with Fusion*

Join Fusion's Random Play Dance, show off your best dance skills, and have fun with fellow fans! Almost every K-Pop song has a set choreography accompanying it, and at Random Play Dance, RPD for short, they will play the popular, new, and old songs and if you know the dance, you join the floor and show it off. An event fun for anyone who enjoys dance, K-Pop, music, or just wants to watch people come together for a shared passion!

**Denchi, 13.30-15.30**

## Mario Kart Tournament

Get going and get drifting! Mario and pals are ready to break some traffic rules – all in the name of glory! We hope that you're fresh and awake, because you'll need all your focus to win!

**Game Room, 18.00-20.30**

## Meet & Greet: Arcane VAs

Do you have something you are dying to get signed by the cast from Arcane? A picture? A coffee mug? A plushie? Then this is your chance. Drop by Tokidoki and meet the Danish voices behind Vi (Tara Toya), Ekko (Mads Malik Grosos), and Jinx (Sol Amanda Wendel), and score a memento that will last you a lifetime.

**Tokidoki, 15.00-16.30**

## Meet & Greet: One Piece VAs

Do you have something you are dying to get signed by the cast from One Piece? A picture? A coffee mug? A plushie? Then this is your chance. Drop by Tokidoki and meet the Danish voices behind Nami (Thit Aaberg), Zoro (Julian T. Kellerman), and Nefertari Vivi (Iris Mealor Olsen), and score a memento that will last you a lifetime.

**Tokidoki, 18.00-19.30**

## Meet the Danish Voices behind Arcane

Meet the Danish voices behind Vi (Tara Toya), Ekko (Mads Malik Grosos), and Jinx (Sol Amanda Wendel), and explore the Arcane universe together with director Kristoffer Alm. The Danish crew will talk about what it is like to give life to iconic characters, give behind the scenes insight, and answer all sorts of questions you might have.

**Minna, 13.15-14.45**

## Meet the Danish Voices behind One Piece

Ever wondered what it is like to voice the Danish version of THE most well-known anime of all time? Drop by and listen to the voice actors behind Nami (Thit Aaberg), Zoro (Julian T. Kellerman), and Nefertari Vivi (Iris Mealor Olsen) talk about the entire process from start to, well, ongoing, along with director Kristoffer Alm.

If you have ever wondered what goes on behind the scenes, and what goes through a voice actor's head while voicing some of the most prominent characters of the last three decades, this is your chance to satisfy your curiosity.

**Denchi, 15.45-17.15**

## Mahjong Intro

*With Riichi*

Mahjong originates in China and has existed for more than 150 years. The game is pretty, but can be difficult to figure out on your own. That's why Riichi is ready to teach you how to play and show you all the tips and tricks.

**Tabletop City, 14.00-16.00**

## Pokémon – Capsule Monsters II: More Secret Stories

*with Jacob Bechmann*

A continuation of the talk "Capsule Monsters – The Secret Stories Behind Pokémon" from last year's J-Popcon!

After Pokémon Red/Green's release, the Pokémon franchise exploded in Japan. With trading cards, manga, and anime. At the same time, Game Freak boldly stated that their development of a white-hot sequel, Pokémon 2, had begun. What was Game Freak working on? How did it look? Which Pokémon were cut? Jacob Bechmann will once again take us back to the past for a secret story behind Pokémon. One that we've probably never heard before!

The talk is a continuation, but can easily be enjoyed on its own. Every Pokémon fan and Poké-curious person is welcome!

**Sora, 17.30-18.30**

## Project Diva Tournament

The cyber idol Hatsune Miku will allure us into her palace, where you'll be tested in your rhythm of the classic Vocaloid songs! If you are fond of the Japanese digital idols, you'll have to try your luck at this tournament.

**Game Room, 15.00-17.00**

## Sake Tasting (18+)

Experience the famous Japanese alcoholic drink – sake! Swing by our Lounge (18+) and treat your tastebuds to a great taste sensation. Remember to bring your legitimate picture ID to get into our Lounge (18+). You must have purchased access to the tasting online beforehand.

**Tokidoki, 20.00-21.30**

## Shopping in Japan

*with Fake is Sad*

These days, shopping for things from abroad is only a mouse click away, but the special merchandise can be difficult to obtain, so most of the time, a shopping spree in Japan is called for, especially with the cheap Yen. This lecture delves into shopping in Japan itself, but also making use of online auction sites and middleman services.

**Chibi, 18.15-19.15**

## Smash Bros. Ultimate Tournament

CPH Esports returns once again to host fighting game tournaments at J-Popcon! Come join us when we battle it out in Smash Bros. Ultimate! The tournament is open for every skill level, so come and join in on the fun!

**Game Room, 13.00-17.00**

## Social Skills 101

*with Cosmikk*

An interactive panel on social skills, aimed at people in the community. Here, we talk about themes like self worth and finding your confidence along with general conversational skills. Cosmikk will share what he has learnt and make it as fun and engaging as possible.

**Sora, 16.00-17.00**



## Special Effects: Masterclass

*with NYX Professional Makeup*

Learn how to do special effects makeup with NYX Professional Makeup. A certified professional makeup artist from NYX Professional Makeup will teach you exciting and creative techniques to add cool effects and bring your cosplay makeup to the next level.

**Denchi, 17.30-18.30**

## Studio Ghibli Quiz

Step into the worlds of Ghibli! Test your knowledge of films, characters, and spells in this enchanting quiz for true fans.

**Chibi, 14.30-15.30**

## Tekken 8 Tournament

CPH Esports returns once again to host fighting game tournaments at J-Popcon! Come join us when we battle it out in Tekken 8! The tournament is open for every skill level, so come and join in on the fun!

**Game Room, 19.00-23.00**

## This or That: Anime Edition

Is sub or dub superior? Do you say Tokyo Mew Mew or Mew Mew Power? Who would win in a fight, Goku or Sailor Moon? Let your opinion be known and make enemies for life.

**Chibi, 15.45-16.45**





## **Travel in Japan: How, When, and Where?**

We probably all dream about going on a trip to Japan – if you're not one of the lucky ones who have already been there. But what should you visit over there? Where are most of the tourists – and how do you avoid them? When do the sakura flowers bloom, where should you see them, how do you order tickets to the Shinkansen, are all toilets equipped with butt flushers and music? There are many questions and Line from Idræts-højskolen Bosei will do her best to answer them and give you all the tools to plan the perfect Japan trip. Line has lived two years in Japan and travels there twice a year with the folk high school, so she knows all the tips and tricks.

**Minna, 10.15-11.45**

## **Twister Tournament (18+)**

Come enjoy a festive Saturday evening with Twister! Our Lounge (18+) is clearing the dancefloor, making room for the biggest and baddest Twister competition! Grab your friends – or yourself – and see who is flexible enough to become Twister Champion of J-Popcon 2026! Make sure to grab a spot and sign up with the bar staff before the competition starts.

**Lounge (18+), 14.00-15.00**

## **Umamusume: Pretty Derby Quiz**

Test your knowledge of Umamusume Pretty Derby and meet other fans! Only the fastest reach the finish line!

**Chibi, 17.00-18.00**

## **Vtuber Q&A: Voice Acting in Video Games**

*with Sebastian Valentine*

Vtuber and voice actor, Its\_valentime, talks about what it's like to be a voice actor and voice acting with a focus on video games, but also a bit about the similarities between normal animation voice acting and game voice acting.

**Minna, 19.00-20.15**

## **Werewolf**

A staple at J-Popcon, Werewolf is back! Join us for a night of fun and mystery. At day, all seems well in your village, but everything changes at nightfall. On the outside, it's a simple village and you are its citizen, but nothing is what it seems. Figure out who amongst your friends you can trust, but be careful. One of them might just be a werewolf.

**Sora, 20.00-23.30**

## **Meet Cyberspace Celebs: Danish YouTubers**

Swing by Tsubasa for a talk between different Danish YouTubers, who will take you through their journey into online creation. If you've ever wanted to know how it feels to be an internet star or to get some good tips on how to start yourself, don't miss it!

**Tsubasa, 13.15-14.45**



# Sunday

## **Anime Review Quiz**

From glowing praise to brutal takedowns, put your intuition to the test in this unique quiz! You'll be shown screenshots of reviews from MyAnimeList, but without the anime title. Your mission? Guess which anime the review is about!

**Sora, 11.00-12.00**

## **Back to Basics: Masterclass**

*with NYX Professional Makeup*

NYX Professional Makeup presents a beginner-friendly basic makeup masterclass. A certified professional makeup artist from NYX Professional Makeup will teach you how to easily complete your cosplay and make your character come to life.

**Tsubasa, 13.00-14.00**

## **Badges & Bookmarks**

### **Workshop 2**

Sports College Bosei invites you to a cut-and-paste workshop, where you can peacefully make badges or bookmarks out of your old mangas, magazines, stickers, or your own drawings. You can also have your name written in Korean hangul and use it in your design.

**Sora, 13.30-16.00**

## **Cleaning and Storing Costumes**

*with Ashley Ilunaneke*

Costumes are more than clothing – they are storytelling tools, historical artifacts, and significant investments. This panel brings together knowledge from costume design, wardrobe supervisors, and preservation specialists to explore best practices for cleaning, maintaining, and storing theatrical costumes.

We will discuss practical approaches to laundering and spot-cleaning delicate materials, handling specialty fabrics and embellishments, and balancing wearability with long-term preservation. The conversation will also cover effective storage solutions for small and large costume collections, strategies for preventing damage from pests, moisture, and light, and tips for extending the life of the costumes we all love!

Whether you work in professional theatre, education, community productions, or are a passionate cosplayer, this panel offers valuable insights into protecting costumes so they can continue to support storytelling for years to come!

**Minna, 10.45-11.45**

## **Closing Ceremony**

End J-Popcon 2026 with a bang and stop by to say goodbye to a fantastic weekend at the Closing Ceremony! We round the weekend off by celebrating the community, watch a good performance, and say the final goodbye.

**Sakura, 16.00-17.00**



## Code Vein 2: Sneak Peek

*with Bandai Namco*

Play the newly released action RPG from Bandai Namco, Code Vein 2, and take the chance to ask your questions to world-renowned Danish cosplayer, Trine.k.n, who will showcase her cosplay from the game. Lastly, don't miss the democratic character creator experience – Trine builds a Code Vein 2 character live, and the audience decides how it looks!

**Tokidoki, 13.00-14.00**



## Cosplay Photography & Posing 101

From mobile phone shots to con worthy pictures! Learn the basics of cosplay photography, editing, and posing in this intro workshop for both cosplayers and photographers.

**Chibi, 13.15-14.15**

## D&D Quiz

What dice do you roll for damage with a greatsword? What colours are tieflings? It's finally time to show off your knowledge of Dungeons & Dragons!

**Sora, 12.15-13.15**



## How to Be Funny on Stage

*with Amenoo Atelier*

Comedy is for everyone, and if you have ever been interested in writing for laughs, this panel is for you. Here, Amenoo will share her own knowledge, tips and tricks, and good insight in how to write fun performances for competitions and skit shows.

**Minna, 12.00-13.00**

## How to Play Pokémon TCG

An event where people can come, sit down, and learn how to play the Pokémon TCG. Instructions on game mechanics, tips on deck building, and much more.

**Tabletop City, 11.00-13.00**

## J-Popcon's Cosplay Show & Craftsmanship Competition

Our very own 'Søndagsshow' and craftsmanship competition are something that every cosplayer should be looking forward to watching! We Danes have a flair for comedy and extravaganza, both the cosplay show and craftsmanship competition will be an explosive affair.

**Sakura, 14.30-16.00**

## J-Popcon's Cosplay Show & Craftsmanship Competition: Stream

Watch the livestream of our Søndagsshow, as it takes place on our Sakura stage, over at Denchi and Tsubasa!

**Denchi & Tsubasa, 14.30-16.00**

## Japan Travel for Every Wallet

*with Fake is Sad*

Always wanted to travel to Japan, but you don't want to break the budget, or just don't know where to start? Kaj tells you all about the many different sides of Japan travel, and how you can stay on top of your budget, while still enjoying the finer things in the land of the rising sun. We'll talk about plane tickets, medication, internet, getting around, money, driving, things to do and avoid, and many other subjects that come to pass. We'll also be talking about taxes, suitcases, and the upcoming new rules for travelling to Japan.

**Chibi, 11.00-13.00**

## KPop Demon Hunters: Meet the Danish Voice Actors

Come and meet the Danish VA team behind the HUGE success KPop Demon Hunters, and get answers to all the things you've been wondering about. Bobby (Malte Milner Find), Zoey (Isabella Kjær-Westermann), and Mira (Emilie Werner Semmelroth) are beyond ready to talk about the process of bringing the characters to life together with director Sigurd Marconi.

**Denchi, 11.00-12.30**

## Lasse Vestergaard: Q&A

Lasse Vestergaard has been part of the Danish anime community for more than a decade and is no stranger to the Danish anime convention scene. Here, the famous YouTuber with more than 15,000 subscribers, he's a powerhouse on the Danish YouTube scene, and here he'll tell you about his journey with anime, gaming, and answer a lot of your questions!

**Tsubasa, 11.00-12.30**

## Manga in Danish

Which manga have been published in Danish in 2025? And what will 2026 bring? What are the challenges and pleasures working with manga? Presented by layouter and translator Michelle Rivas and editor and publisher from Faraos Manga, Paw Krogsbæk Mathiasen.

**Minna, 14.30-15.30**



## Meet and greet: KPop Demon Hunters

Do you have something you are dying to get signed by the cast from KPop Demon Hunters? A picture? A coffee mug? A plushie? Then this is your chance. Drop by Tokidoki and meet the Danish voices behind Bobby (Malte Milner Find), Zoey (Isabella Kjær-Westermann), and Mira (Emilie Werner Semmelroth), and score a memento that will last you a lifetime.

**Denchi, 12:30-13:30**

## Pokémon Card Trading Event

Calling all trainers! Bring your Pokémon cards and trade with fellow fans in a fun and cozy con-friendly space. Enjoy good vibes and exciting swaps, with a friendly and experienced host there to guide fair trades for everyone!

**Tabletop City, 13.00-16.00**

## Tekken 5 Tournament

Ready for King, Jin, and knuckledusters? Jump into this Tekken 5 tournament and fight your way to the top. The honour, bragging rights, and a prize are at stake. Only one can win. Is it you?

**Game Room, 12.00-14.30**

## The Guide to Efficient Crafting

*with Bish Cosplay and Talon's Cosplay Crusade*

The convention is just around the corner and you still haven't finished your costume? Just yesterday there was half a year left until the competition, and today there's only a week until the deadline? We've all been in this situation, but only some of us managed to get out of it with both our armours and sanities intact! During this panel, you will learn how to deal with the difficulties of creating cosplays with tight deadlines.

**Minna, 13.15-14.15**



# VIPs at J-Popcon



## *Lasse Vestergaard*

Lasse Vestergaard is a Danish YouTuber with more than a decade of experience! He has more than 150.000 subscribers and a dedicated following! He is also no stranger to the Danish convention scene and has been an avid guest at conventions like SVS, Genki, and yours truly – J-Popcon.



## *Bish Cosplay*

Bish Cosplay has cosplayed since 2015 and together with her partner, Talon's Cosplay Crusade, and on her own, she has represented Poland numerous times on international stages.



## *Sigurd Marconi*

Sigurd is a Danish director. He has directed the Danish dub of KPop Demon Hunters and you can meet him at the KPop Demon Hunters events.





## *Emilie Werner Semmelroth*

Emilie is a Danish actress and voice actor. She is the Danish voice of Mira in KPop Demon Hunters. You can meet her at the KPop Demon Hunters events.



## *Isabella Kjer-Westermann*

Isabella is a Danish actress and voice actor. She is the Danish voice of Zoey in KPop Demon Hunters. You can meet her at the KPop Demon Hunters events.



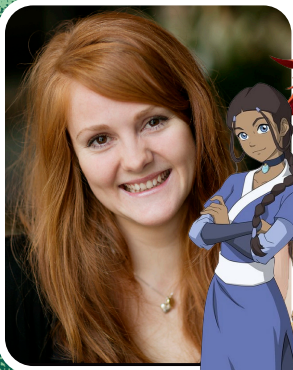
## *Malte Milner Find*

Malte is a Danish radio and podcast host, director, and voice actor. He is the Danish voice of Bobby from KPop Demon Hunters. You can meet him at the KPop Demon Hunters events.



## *Sol Amanda Wendel*

Sol is a Danish journalist and voice actor. They are the Danish voice of Jinx from Arcane, and you can meet them at the Arcane events.



## *Tara Toya*

Tara is a Danish actress and voice actor. She is the Danish voice of Katarina from Avatar: The Last Airbender and Vi from Arcane, and you can meet her at the Arcane events.



## *Mads Malik Grosos*

Mads is a Danish actor and voice actor. He is the Danish voice of Sokka from Avatar: The Last Airbender and Ekko from Arcane, and you can meet him at the Arcane events.





## *Kristoffer Alm*

Kristoffer is a Danish director. He has directed the Danish dub of One Piece and you can meet him at the One Piece events.



## *Julian T. Kellerman*

Julian is a Danish actor and voice actor. He is the Danish voice of Jinu (KPop Demon Hunters), Corvus (The Dragon Prince), Shiro (Voltron), and Roronoa Zoro (One Piece). You can meet him at the One Piece events.



## *Thit Aaberg*

Thit is a Danish actor and voice actor. They are the Danish voice of Nami in One Piece. You can meet them at the One Piece events.



## *Annevig S. Elbe*

Annevig is a Danish actress, director, and voice actor. She is the Danish voice of Dawn (Pokémon), Anzu Mazaki and Alexis Rhodes (Yu-Gi-Oh!), and Tenten (Naruto). She will join the panel at Voice of a Generation.



## *Iris Mealor Olsen*

Iris is a Danish actress and voice actor. She is the voice of Nefertari Vivi in the new Danish dub of One Piece. You can meet her at the One Piece events as well as a part of the panel at Voice of a Generation.



## *Vibeke Dueholm*

Vibeke is a Danish actress, singer, director, and voice actor. She is the Danish voice of Candy in Candy Candy. She will join the panel at Voice of a Generation.





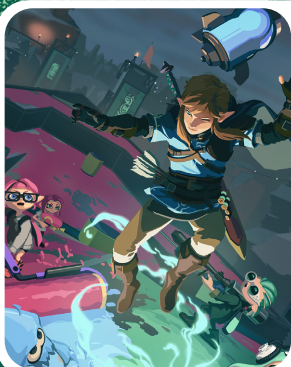
## *Stickymaelk*

Stickymaelk is a Danish freelance illustrator and comic artist. She draws digitally, but the sketch-like style remains, its colours and textures giving an analogue expression. She creates both fandom and original works, often depicting witches or their fantastical creature acquaintances. Find her at 33 in Artist Alley.



## *Lon*

Lon is an anime animator and illustrator who has worked on shows such as One Piece, Pokémon, and The Seven Deadly Sins. He's currently drawing the manga RAGE QUIT, written by Freja Oldrup, which you can read on Webtoon and Tapas! Find him at 113 in Artist Alley.



## *Stanton Feng, aka K.D.*

Stanton Feng is a creating concept artist and illustrator in the game and entertainment industry. His clients include Blizzard Entertainment, Games Workshop, Magic: The Gathering, Riot Games, CD Projekt Red, Creative Assembly, 343 Industries, and more. Find him at 114 in Artist Alley.



# Cosplay Shows



## Danish Cosplay Championship

**Sakura**

**Saturday: 19:30–21:30**

Danish Cosplay Championship (DCC) is the first of the three cosplay shows hosted at J-Popcon. At DCC, the Danish representatives for some of the biggest international cosplay competitions will be chosen: Extreme Cosplay Gathering in France, International Cosplay League in Spain, Cosplay World Masters in Portugal, and Nordic Cosplay Championship in Sweden.

Come watch the contestants on the stage in their incredibly beautiful costumes and experience their impressive and eye-catching performances, which all the contestants have spent months preparing.



## J-Popcon's Cosplay Show

**Sakura**

**Sunday: 14:30–15:30**

J-Popcon's Cosplay Show is our traditional show, which dates back to before J-Popcon started hosting the international qualifiers. In J-Popcon's Cosplay Show, we focus on having a good time while we share our passion for cosplay.

## J-Popcon Cosplay Craft Competition

**Sakura**

**Sunday: 15:30–16:00**

This year, J-Popcon will once again be hosting a craftsmanship competition. Here, the participants will show off the artistry and craftsmanship that went into their costumes without performing an act. They will compete to represent Denmark at Tournament of Champions in Austria and International Cosplay League in Spain. You can look forward to seeing the many beautiful costumes presented in a full-blown fashion show.







**Extreme Cosplay Gathering (ECG)** is the biggest cosplay championship in Europe, where cosplayers from 22 countries in Europe, the Americas, and Oceania compete in a joint solo and group category during the big finale at Japan Expo in Paris, France. The competition's primary focus are the visually beautiful and impressive acts.



**Cosplay World Masters (CWM)** is the only international competition taking place in Portugal. This solo qualification is based on both the act as well as the cosplay and its accuracy, and 12 countries compete for the title of Cosplay Master. The finale takes place at Iberanime, Lisboa.



**Tournament of Championships (ToC)** is a fully craft-based competition – it is all about the cosplay, its details, its techniques. It took place for the first time in 2023 at YuniCon in Schwechat, Austria, and 16 countries participate in the competition. Our finalist will be chosen during our craftsmanship competition on Sunday.



The main goal with the **Nordic Cosplay Championship (NCC)** is to raise the bar of quality for cosplay at events everywhere. It has traditionally been Sweden, Norway, Denmark, Finland, and Iceland in the competition, as the Nordic part of the name implies, but recently multiple other countries from Europe, the Americas, and Oceania have joined as well, bringing the total to 16 countries. Focus is equally on craftsmanship and acting. It takes place at NärCon in Linköping, Sweden.



With both an act-based duo category and a craft-based solo category, **International Cosplay League (ICL)** is our only qualification with a selection during both Saturday and Sunday. At the grand finale at Japan Weekend Madrid, Spain, 16 countries compete for the prize. The act-based duo category is based 60% on performance, 40% on craftsmanship, while the craft-based solo category is solely based on the craftsmanship and will only consist of a catwalk. The duo will be selected during DCC, the solo during our craftsmanship competition on Sunday.



# Saturday Judges



## Ashley Ilunanecko

14 years of cosplay experience

**Nationality:** Dutch

**Pronouns:** She/her

**Occupation:** Self-employed theatre designer/dresser



[www.ilunanecko.net](http://www.ilunanecko.net)



[instagram.com/ashley\\_ilunanecko](https://www.instagram.com/ashley_ilunanecko)



[www.facebook.com/ilunanecko/](https://www.facebook.com/ilunanecko/)



## Amenoo Atelier

15 years of cosplay experience

**Nationality:** Swedish

**Pronouns:** She/her

**Occupation:** Tailor for stage costumes



[instagram.com/amenooatelier](https://www.instagram.com/amenooatelier)



## Talon's Cosplay Crusade

10 years of cosplay experience

**Nationality:** Polish

**Pronouns:** He/him

**Occupation:** Game designer



[tiktok.com/@talonscosplaycrusade](https://www.tiktok.com/@talonscosplaycrusade)



[instagram.com/talonscosplaycrusade](https://www.instagram.com/talonscosplaycrusade)

# Sunday Judges



## Caiva

14 years of cosplay experience

**Nationality:** Danish

**Pronouns:** She/her

**Occupation:** Local cryptid



[facebook.com/Caivacosplay](https://facebook.com/Caivacosplay)



[instagram.com/caivacosplay/](https://instagram.com/caivacosplay/)



## Pumkit Cosplay

16 years of cosplay experience

**Nationality:** Danish

**Pronouns:** She/her

**Occupation:** Trained clothing designer



[facebook.com/profile.php?id=100063776971896](https://facebook.com/profile.php?id=100063776971896)



[instagram.com/pumkit\\_cosplay](https://instagram.com/pumkit_cosplay)



## Graceful Godfish

13 years of cosplay experience

**Nationality:** Danish

**Pronouns:** They/them

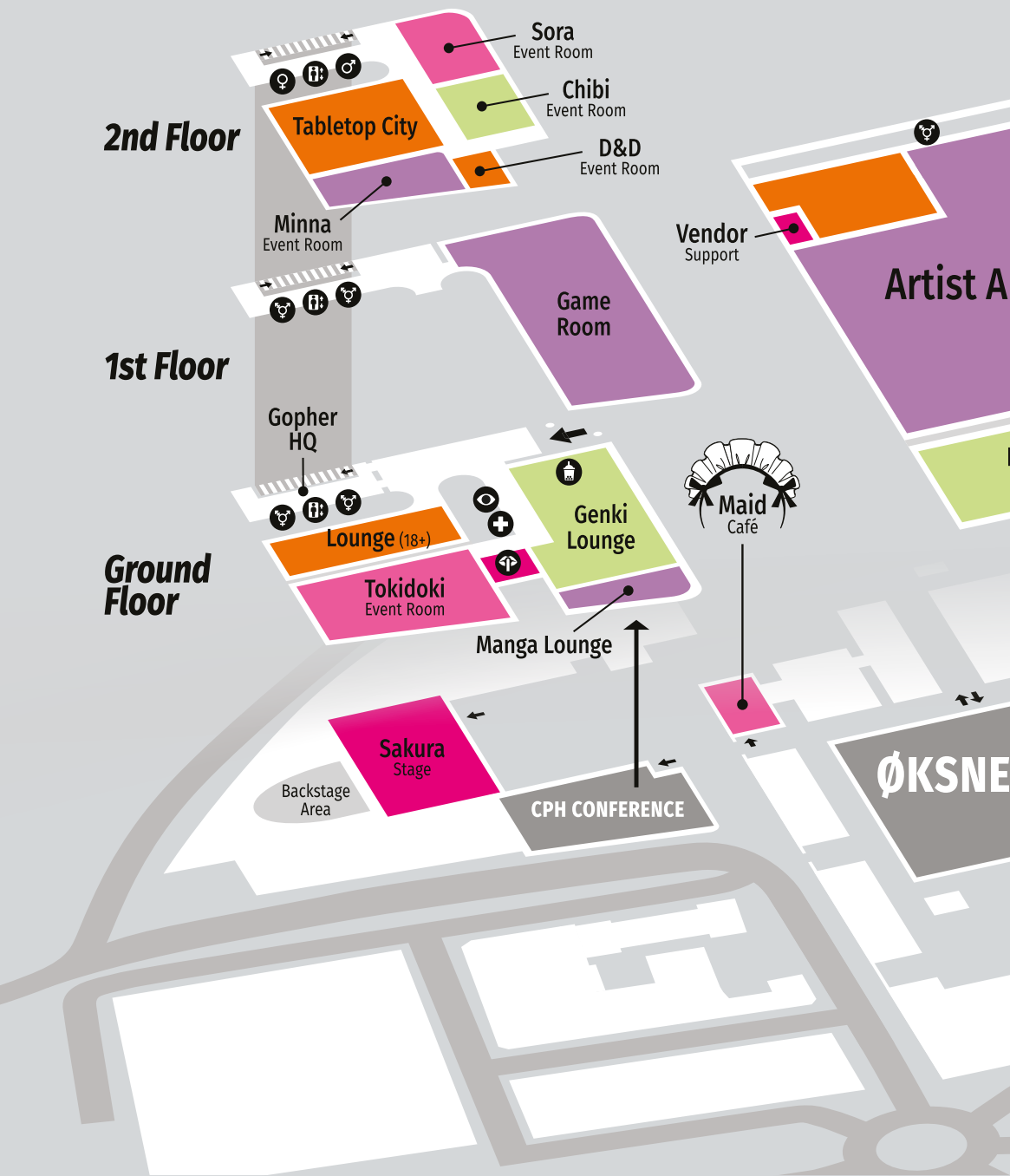
**Occupation:** Trained nurse



[instagram.com/graceful\\_godfish](https://instagram.com/graceful_godfish)

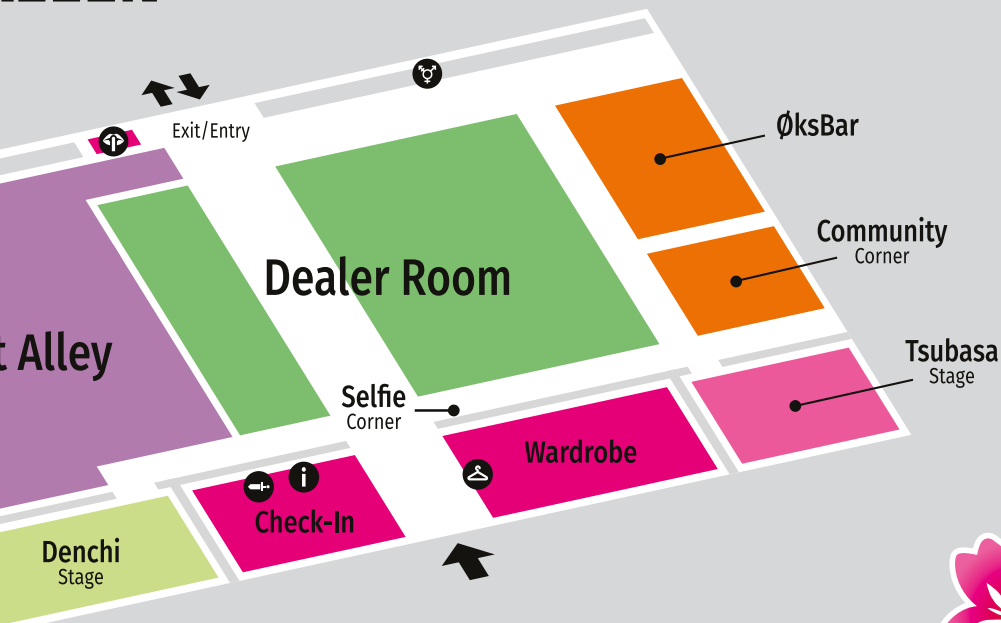
# CPH CONFERENCE

ØKSNEHAL





ALLEN



NEHALLEN

Main Entrance  
Check-In

**POPCON**



- |             |                      |
|-------------|----------------------|
| Information | Weapon Check         |
| Wardrobe    | Quiet Lounge         |
| Medic       | Toilet - All genders |
| Security    | Toilet - Male        |
| Lift        | Toilet - Female      |
| Bubble Tea  |                      |



# Thank you

J-Popcon is run solely by volunteers. We do this because we love Japanese popular culture and the community surrounding it. We do this because we want to create a space where we can all enjoy our love for Japan together – we do this for you!

So, remember to thank our beloved volunteers during the convention.  
Without them, no J-Popcon!





**Nadia Mouritzen**

Festival leader



**Danny Zheng**

Festival leader



**Kristian Spencer**

Festival leader



**Anders Schultz**

Festival Adviser



**Ida Bjerring Winkler**

Festival Adviser



**Rune Hansen**

Festival Adviser



Thank you to our sponsors & partners



MATRIX



NYX

PROFESSIONAL MAKEUP



Self  
made®



SHIRTING LIVERING - 1-2 DAGU - GRATIS LIVERING I DE V. KØB OVER 349KR.

Sløjd-Detaljer



CAMERA FILM

IDUF



GRAND